

Movie Jib

Movie Jib Operating Instructions

English Version



I General safety instructions:

Use the Movie Jib always on sustainable ground
Do not overload the Movie Jib (max load fully extended is 30 kg and 74 kg counterweights)
Operate with handgrips always to secure counterweights

II Installation:



Movie Jib comes in 2 bags



Setup bull stand



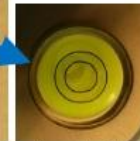
Level bull stand to ...



required height ...



and fix each leg with the brass ring and the quick pin.



Untighten screw and set the spirit level horizontally



Remove tilt axis from bull stand head and place Movie Jib into it (2 center pins meet 2 holes)

Fixing screw to be inserted from bottom side

Mount parallelogram bar with tilt axis on bull stand head ...



... and secure with quick pin

Mount front side and secure with quick pins ...

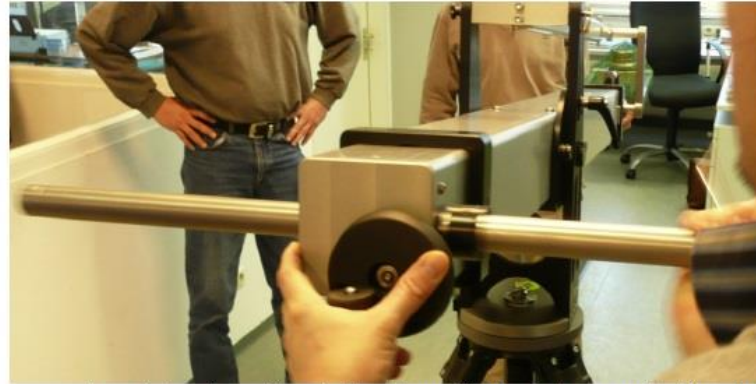


correct Quickpin position

Adjust front extension parallel as requested and fix both knurled screws in the related notches



To insert counterweight bar remove quick pin, ...



insert bar from the right side until black ring meets the aluminum profile, ...



insert quick pin again until its ...



lower position.



To remove handle push button ...



and pull.



Put weights on approx. 7 – 10 kg for balancing), and lock them again with hand grips. Handle for fine adjustment.



Adjust head with spirit level and hexagon nut by hand.

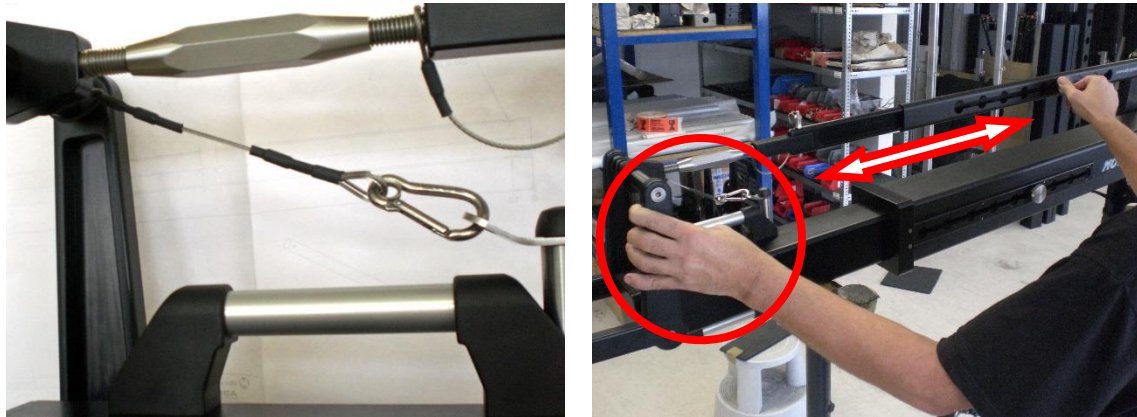
Adjust balance with handle by moving counterweight bar. Always fix the knurled screw after re-adjustment!

MovieTech

Security advice / Sicherheitshinweis MovieJib

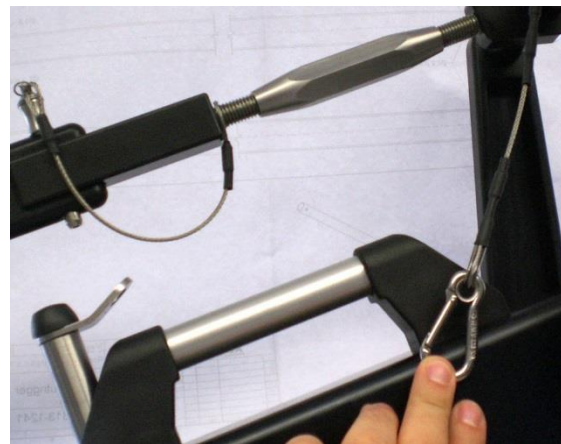
While the length adjustment of the MovieJib it is required to use the safety rope to avoid a tilting of the crane-head.

Um bei der Längenverstellung des MovieJib Krans ein Kippen des Krankopfes zu vermeiden, ist die Verwendung des Sicherungsseils vorgeschrieben.

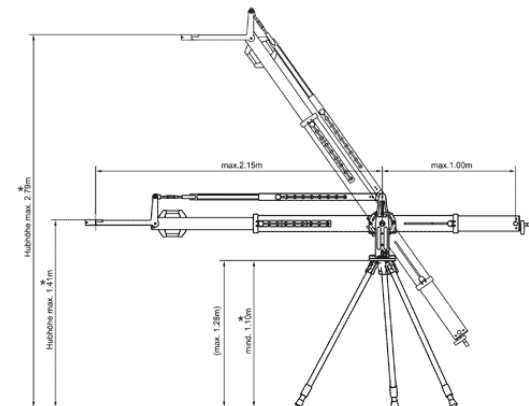


During the use of the crane, the safety rope has to be removed again, but the bolts must be tightened.

Bei der anschließenden Nutzung des Krans ist das Sicherungsseil jedoch wieder zu entfernen, die Schrauben müssen festgezogen sein.



MovieTech





Die MovieTech AG mit Hauptsitz in München und Tochtergesellschaften in Mailand und Prag produziert und vermarktet als einer der führenden Hersteller Produkte und Lösungen für die Film- und Fernsehindustrie.

Die Produktpalette von MovieTech konzentriert sich auf die Bereiche: Kamerakräne, Dollys, Lichtsysteme, Remote Heads und entsprechendes Zubehör.

Ziel der Movie Tech AG ist die Herstellung von professionellem Filmequipment, das die Arbeit der Anwender am Set oder im Studio wesentlich erleichtert und die Umsetzung der kreativen Ideen ermöglicht.

The MovieTech AG is based in Munich with subsidiaries in Milan and Prague. As one of the leading manufacturers in its field, it produces and markets products and solutions for the film industry.

The MovieTech product range concentrates on the areas of: Camera cranes, dollies, remote heads and corresponding accessories, as well as studio and stage techniques.

The MovieTech mission is the manufacture of professional film equipment that not simplifies the work of those using it on the set or in the studio, but also facilitates the implementation of creative ideas.



www.movietech.de



Dollies – Cranes – Remote Heads



www.abc-products.de



Steadycam systems – Light dollies – Light cranes



www.mts-germany.com



Pantographs – Hoists – Telescopes – Trolleys

MovieTech AG (Germany)

Martin-Kollar-Str.9 • 81829 München • Tel.: + 49 (0)89-43 68 91 3 • E-Mail: info@movietech.de

MovieTech Sagl (Swiss)

Via Corti 5 • 6828 Balerna • Tel.: + 41 (0)91-68 30 60 6 • E-Mail: k.shore@movietech.de